

PPM1H Antibody (Center)
Affinity Purified Rabbit Polyclonal Antibody (Pab)
Catalog # AW5604

Specification

PPM1H Antibody (Center) - Product Information

Application	FC, IHC-P, WB,E
Primary Accession	Q9ULR3
Reactivity	Human, Mouse
Host	Rabbit
Clonality	Polyclonal
Calculated MW	H=56;M=56,52;R=56 KDa
Isotype	Rabbit IgG
Antigen Source	HUMAN

PPM1H Antibody (Center) - Additional Information

Gene ID 57460

Antigen Region
235-263

Other Names
Protein phosphatase 1H, PPM1H, ARHCL1, KIAA1157, URCC2

Dilution
FC~~1:10~50
IHC-P~~1:50~100
WB~~1:2000

Target/Specificity
This PPM1H antibody is generated from rabbits immunized with a KLH conjugated synthetic peptide between 235-263 amino acids from the Central region of human PPM1H.

Storage
Maintain refrigerated at 2-8°C for up to 2 weeks. For long term storage store at -20°C in small aliquots to prevent freeze-thaw cycles.

Precautions
PPM1H Antibody (Center) is for research use only and not for use in diagnostic or therapeutic procedures.

PPM1H Antibody (Center) - Protein Information

Name PPM1H

Synonyms ARHCL1, KIAA1157, URCC2

Function

Dephosphorylates CDKN1B at 'Thr-187', thus removing a signal for proteasomal degradation.

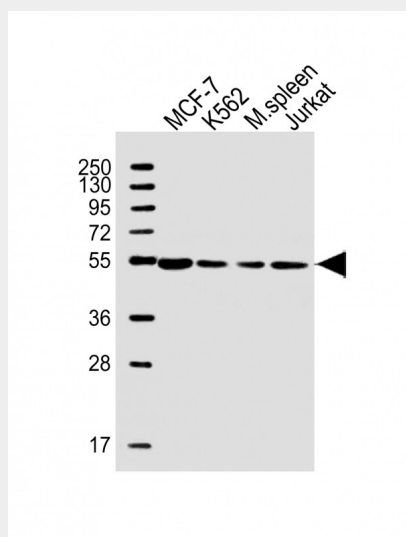
Cellular Location

Nucleus. Cytoplasm

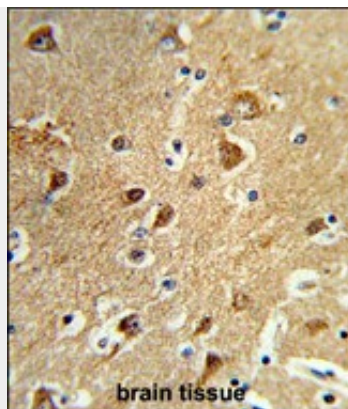
PPM1H Antibody (Center) - Protocols

Provided below are standard protocols that you may find useful for product applications.

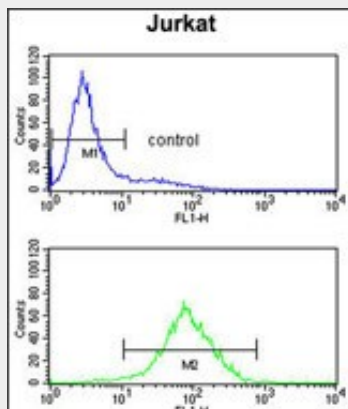
- [Western Blot](#)
- [Blocking Peptides](#)
- [Dot Blot](#)
- [Immunohistochemistry](#)
- [Immunofluorescence](#)
- [Immunoprecipitation](#)
- [Flow Cytometry](#)
- [Cell Culture](#)

PPM1H Antibody (Center) - Images

All lanes : Anti-PPM1H Antibody (Center) at 1:2000 dilution Lane 1: MCF-7 whole cell lysate Lane 2: K562 whole cell lysate Lane 3: mouse spleen lysate Lane 4: Jurkat whole cell lysate Lysates/proteins at 20 µg per lane. Secondary Goat Anti-Rabbit IgG, (H+L), Peroxidase conjugated at 1/10000 dilution. Predicted band size : 56 kDa Blocking/Dilution buffer: 5% NFDM/TBST.



Formalin-fixed and paraffin-embedded human brain tissue reacted with PPM1H Antibody (Center), which was peroxidase-conjugated to the secondary antibody, followed by DAB staining. This data demonstrates the use of this antibody for immunohistochemistry; clinical relevance has not been evaluated.



PPM1H Antibody (Center)(Cat. #AW5604) flow cytometry analysis of Jurkat cells (bottom histogram) compared to a negative control cell (top histogram).FITC-conjugated goat-anti-rabbit secondary antibodies were used for the analysis.

PPM1H Antibody (Center) - References

Sugiura,T., et.al., Cancer Biol. Ther. 7 (2), 285-292 (2008)
Labes,M., et.al., Mol. Cell. Neurosci. 12 (1-2), 29-47 (1998)